



# YOLO RB370 R

Yolo RB370 R is a rescue boat manufactured in India in one piece with a high grade polyethylene plastic through rotational molding process. It is ideal for disaster management operations.

## RIDER - PERKS

Extreme Stability | Abundant Storage | UV Stable | Low on Maintenance  
High Maneuverability | Robust | Double Walled | Double Hulled

## TECH - SPECS

<b>4 m</b>	<b>3.70 m</b>	<b>1.7 m</b>	<b>1.43 m</b>	<b>0.66 m</b>	<b>8 seater</b>
LENGTH OF BOAT	LENGTH OF HULL	EXTERNAL BEAM	INTERNAL BEAM	HEIGHT OF BOAT	CAPACITY





## FEATURES

- 1 Front Storage
  - 2 Anti-Slip Floor
  - 3 Seats with Storage x2
  - 4 Cleats x3
  - 5 Transom\*
  - 6 Scupper Plug
  - 7 Rear Step
  - 8 All-Around Rope Hand Rails
  - 9 Towing Eye x1
- Available w/ PU fill  
Available w/out PU fill



Anti-Slip



Recyclable



Easy to Clean



UV Resistant



Non-Fading  
Colours

## AVAILABLE IN

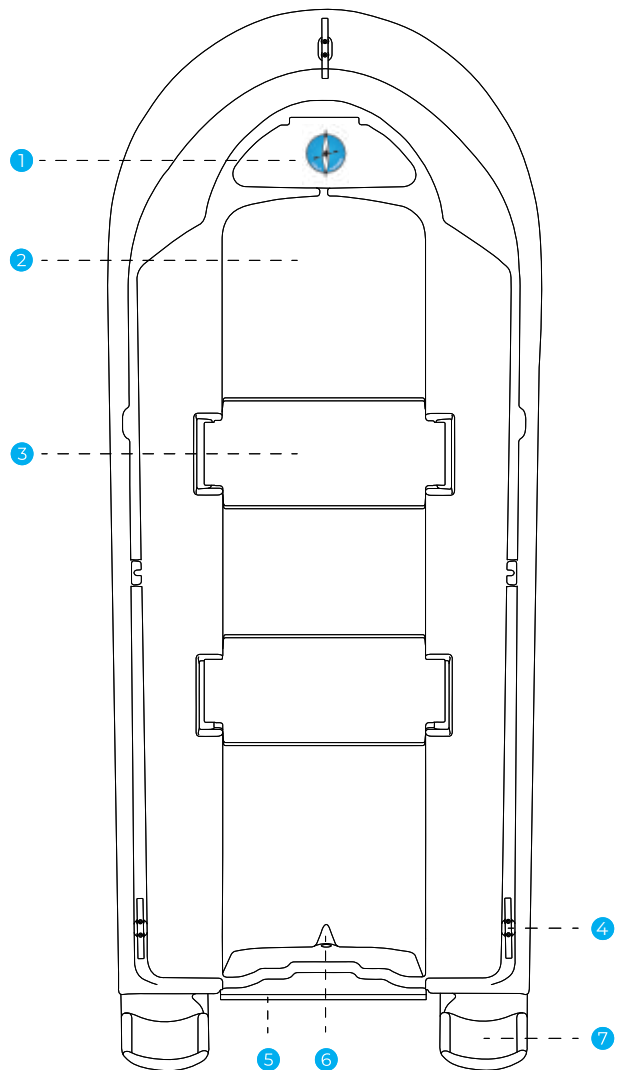


Red



Orange

\*This boat is powered by an OBM, which is not supplied by YOLO.  
YOLO recommends 30 HP OBM with long shaft.



**YOLO**<sup>®</sup>  
You Only Live Once

Arudhra Technoloiges.  
Star Complex, H-1, 7th Block, Vymeethi road,  
Kochi- 682 301, Kerala, India.

Email: [info@arudhratech.com](mailto:info@arudhratech.com)  
Mobile: +91 93606 45892 | +91 89214 98791



/yolokayaks



/yolokayaks



/company/yolokayaks