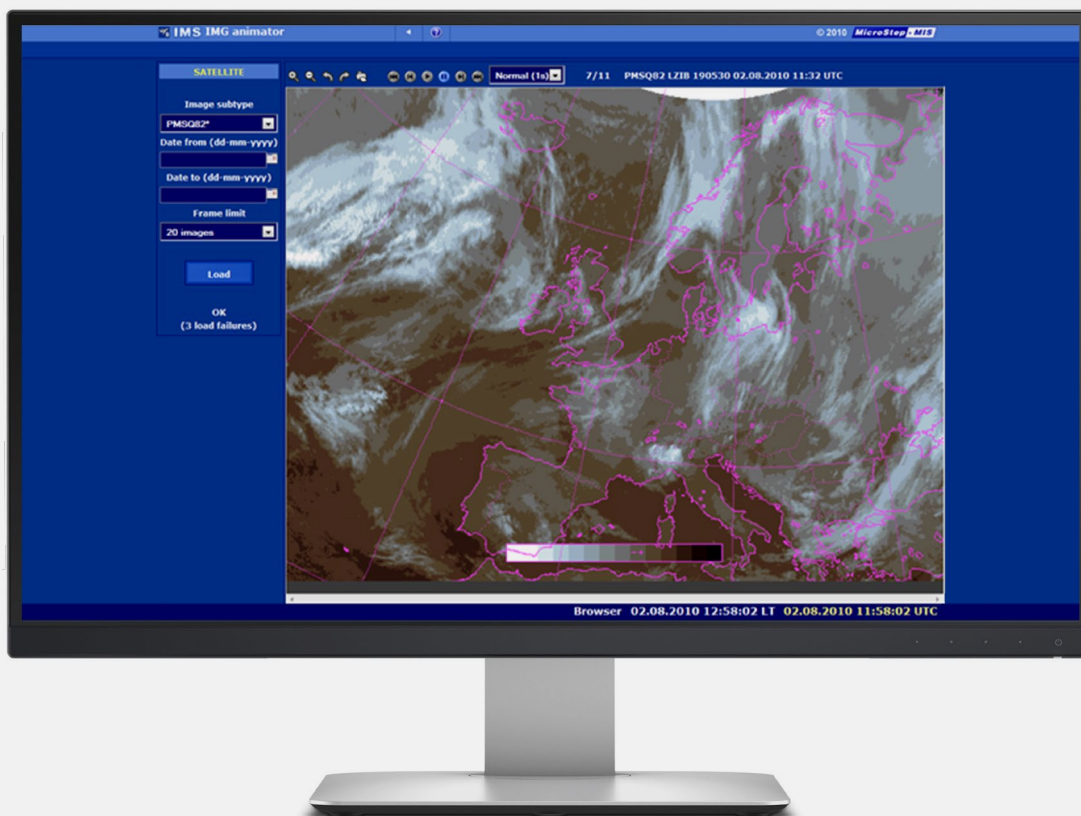


IMS4 Pilot Briefing

Pre-flight documentation for pilots

IMS4 Pilot Briefing supplies meteorological information to aviation users in order to ensure the safety and regularity of air navigation.



IMS4 Briefing workstation, either standalone or fully integrated within IMS4 Automated Weather Observation System, facilitates collecting and printing of flight documentation for pilots based on the local meteorological data and messages received from the GTS or AFTN networks.

The IMS4 Pilot Briefing integrates automatic handling of data validation.

Users can easily collect and print all necessary flight documentation containing the local conditions, conditions at the target and along the flight route.

A single definition of the flight-route into the system is sufficient for the IMS4 Pilot Briefing to master this task in a few seconds time. Flight-route definition can be performed by the selection of

a station list on the basis of ICAO indicators or station names. The stations included in the flight-route provide the basis for the generation of the PIB (pre-flight information bulletin).

Besides standard PIB information like OPMET data, SIGWX and Upper wind-temperature charts, the PIB can contain a cross-section of the temperature and wind conditions along the flight route that also perfectly describe the take-off and landing conditions.

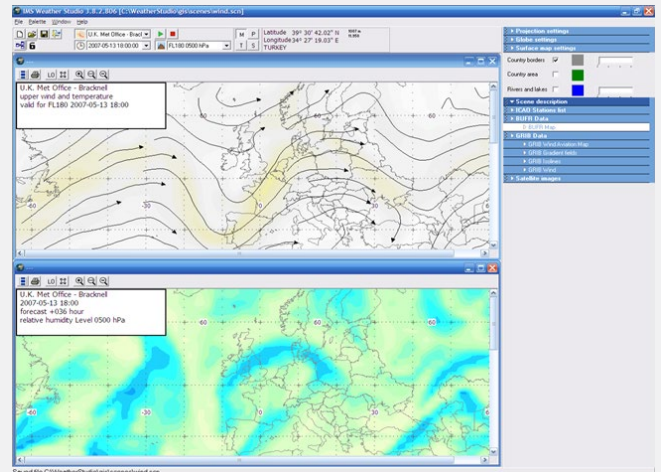
The system warns users about all received meteorological or operational warnings like volcanic ash or tropical cyclone advisories, SIGMETs, AIRMETs, as well as other warnings and administrative messages.

Type: Area

Slovakia PLUS

Stacija	Valid From	QBA [km]	N / B	QBB [N / B] [-M]	QAH-QAT [kt]	QAM [°C]	Weather	QHM [hPa]	MATO
Malacky	21.10.11.00	10.0	3/8	3-2800	340 / 10	8.7 / 1.1		1028	BLU
Bratislava / Kolba	21.10.11.00	30.0	6/8	3-2500 5-20000	VRB / 04	7.4 / 2.3		1027	BLU
Bratislava / M. R. Stefanik	21.10.11.00	25.0	5/8	2-3400 4-13000	320 / 10	9.6 / 1.0		1027	BLU
Piestany	21.10.11.00	30.0	5/8	3-3300 3-13000	340 / 12	9.2 / 1.4		1028	BLU
Zilina	21.10.11.00	35.0	6/8	6-4000	020 / 10	8.0 / -0.5		1027	BLU
Nitra	21.10.11.00	30.0	5/8	1-4000 4-12000	340 / 16	11.6 / -0.2		1026	BLU
Hurbanovo	21.10.11.00	35.0	1/8	1-4000	350 / 10	11.7 / 0.8		1026	BLU
Prievidza	21.10.11.00	30.0	4/8	2-4600 4-14000	040 / 08	10.4 / -1.3		1026	BLU
Budince	21.10.11.00	12.0	5/8	3-4300	VRB / 04	13.7 / 1.4		1026	BLU
Slac	21.10.11.00	25.0	5/8	1-4600 3-10000 5-20000	350 / 08	10.3 / 0.1		1026	BLU
Chopok	21.10.11.00	70.0	4/8	6-4000	070 / 06	5.7 / -6.4		1026	BLU
Liesek	21.10.11.00	45.0	7/8	6-2600	050 / 08	4.0 / 0.8		1027	BLU
Lucenec	21.10.11.00	25.0	4/8	2-3300	VRB / 02	11.0 / 1.5		1025	BLU
Lomnický štít	21.10.11.00	40.0	6/8	6-3000	310 / 12	-8.5 / -18.0		1026	BLU
Stobsko Pleso	21.10.11.00	0.3	9/8	9-0	000 / 00	0.0 / -0.8	FC		RED
Poprad Tatry	21.10.11.00	40.0	7/8	1-2000 3-2600 5-12000	VRB / 02	5.5 / 0.7		1026	BLU
Tatlar	21.10.11.00	20.0	5/8	2-3000 4-11000	050 / 16-25	3.7 / -1.2		1026	BLU
Prešov	21.10.11.00	30.0	5/8	4-3000 5-12000	350 / 17-27	8.1 / -0.1		1028	BLU

Lorem Ipsum



Lorem Ipsum

IMS Airline Documents

SLOVAKIA

Source message PCSQ41 LZIB 081000 RRA
 Routed from channel UDCS_PFP/MSG01 (08.05.2007 13:01:42 UTC):

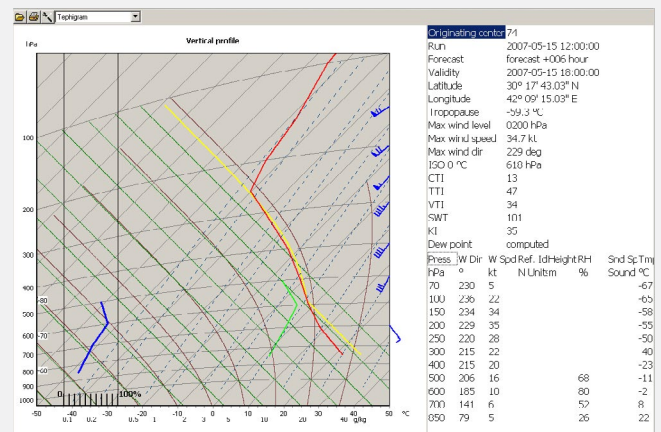
CU BKN040=
 RRA

CU BKN040=
 RRA

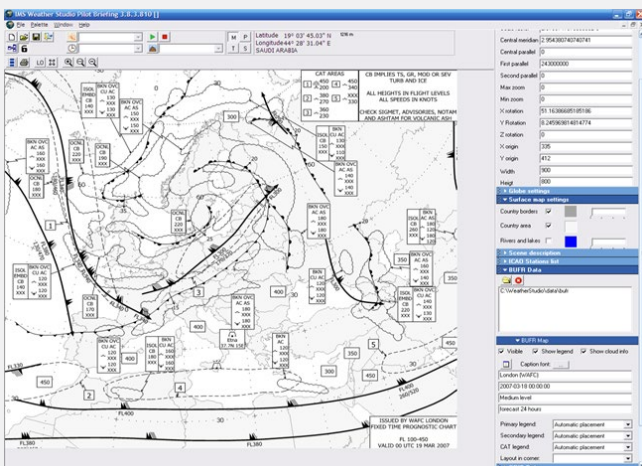
T0301CU

Browser 08.11.2007 12:23:22 LT 08.11.2007 11:23:22 UTC

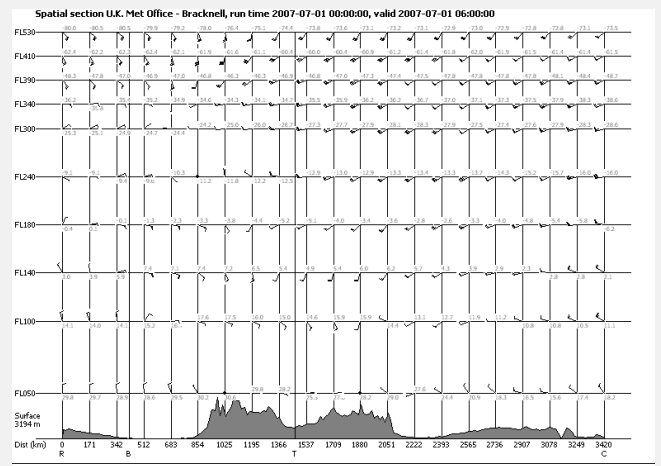
Lorem Ipsum



Lorem Ipsum



Lorem Ipsum



Lorem Ipsum



FLIGHT FOLDER

Flight: YE301

From/Origin: OYSN Sana'a

To/Destination: HECA Cairo Airport

Compiled at: 2007-05-17 01:04:10.186

The standard time used throughout this folder is UTC.

TAKEOFF FORECAST OYSN 2007-05-17 00:00 U.K. Met Office - Bracknell

	wind speed	wind direction	relative humidity	temperature
050	6 m s ⁻¹	324 deg	9.6 %	26.1 C
100	4 m s ⁻¹	26 deg	29.0 %	11.4 C
140	4 m s ⁻¹	59 deg	39.2 %	2.0 C
180	6 m s ⁻¹	54 deg	4.0 %	-5.1 C

LANDING FORECAST: HECA 2007-05-17 00:00 U.K. Met Office - Bracknell

	wind speed	wind direction	relative humidity	temperature
050	6 m s ⁻¹	46 deg	50.6 %	14.5 C
100	8 m s ⁻¹	47 deg	69.0 %	3.2 C
140	7 m s ⁻¹	40 deg	44.2 %	-4.7 C
180	7 m s ⁻¹	69 deg	2.0 %	-12.4 C

The software producing this flight folder is made by MicroStep-MIS www.microstep-mis.com

Compiled at: 2007-05-17 01:04:10.186 UTC, page 1 of 4

CMG 0608 05012KT
 ECGM 1820 VRB03KT=
 :005KT 3000 BR NSC=
 06 02005KT 3000 BR

CF HIRLES TS GR HND OR STV
 TURB AND ICE
 ALL HEIGHTS IN FLIGHT LEVELS
 ALL SPEEDS IN KNOTS
 CHECK SIGMET, ADVISORIES, NOTAM
 AND ASTRIM FOR VOLCANIC ASH
 ISSUED BY METEOROLOGICAL
 SERVICE FOR THE
 BRITISH ISLANDS
 FL 250-630
 VALID 06 UTC 09 MAY 2007

CAT CLASS
 1 430 300
 2 370 280
 3 300 250

IMS4 Briefing & Forecasting Workstation

The software aids meteorological forecaster by visualizing meteorological information and providing templates for standard and local forecasts.

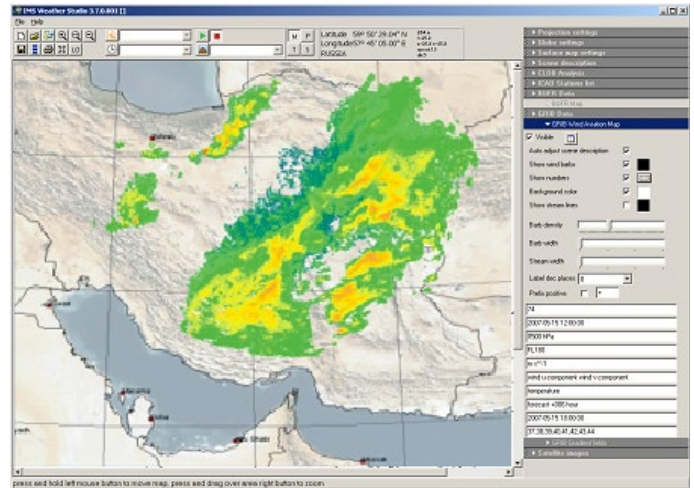
Visualization of meteorological information for forecaster:

- OPMET
- SADIS
- GRIB
- BUFR
- Soundings
- Radar
- Satellite
- Lightning
- VAAC and TCAC information
- other...

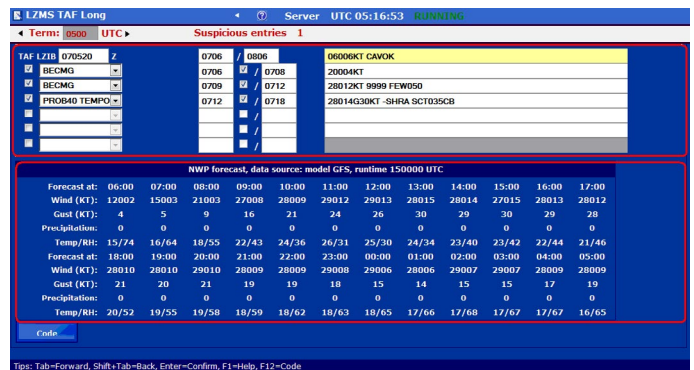
Templates for creation of forecasts and warnings:

- AIREP
- AIRMET
- GAMET
- Aerodrome Warning
- SIGMET
- TAF
- TREND
- Wind Shear Warning
- other... (e.g. warnings according to regional agreement)

Messages are checked for errors before compilation. GTS/AFTN headers and other automatically available information is filled in by the system.



Lorem Ipsum



Lorem Ipsum